

# Bituthene® MRX

Methane and radon gas resistant, self-adhesive membrane.

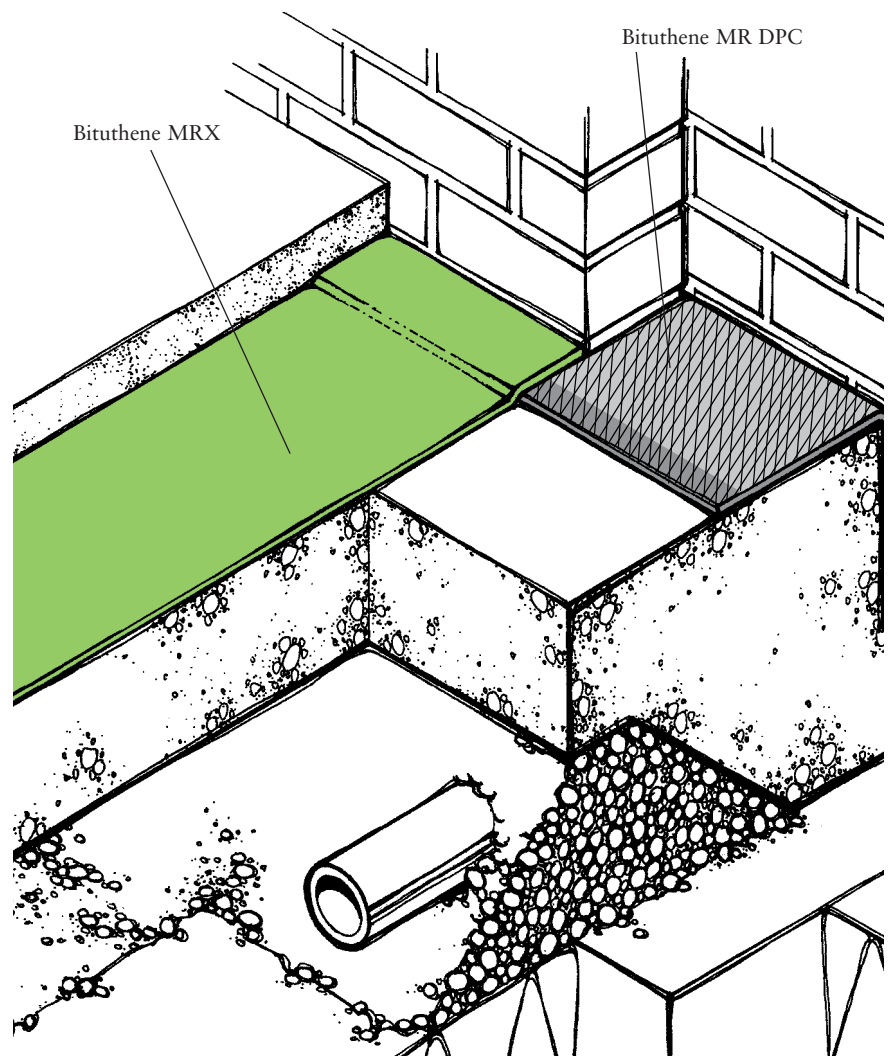
## Description

Bituthene® MRX is a methane, carbon dioxide and radon resistant grade of Bituthene specifically designed to resist these harmful gases.

Bituthene MRX has a specially developed high strength composite backing film laminated to self-adhesive polymer compound designed to resist the passage of harmful gases.

## Advantages

- Resistant to passage of methane, carbon dioxide and radon gas.
- Gas resistant - methane, carbon dioxide and radon gas protection in excess of the standard membrane requirements in BRE Reports 211 (radon) and 212 (Methane and carbon dioxide).
- Water and vapour proof.
- Laminated metal foil/polymer - provides dimensional stability, high tear strength, puncture and impact resistance.
- Single layer - simple, reliable, low labour cost.
- Cold applied - no heating plant required, eliminates fire hazard.
- Self-adhesive - continuity at rolled overlaps, polymer formulation allows for healing of small punctures.
- Factory controlled thickness - no variation by site practices.



## Supply

<b>Bituthene® MRX</b>	
Roll length	20 metre
Roll width	1 metre (20 sq m)
Thickness	min 1.3 mm overall
Weight	34 kg/roll
Rolls per pallet	15

<b>Bituthene® MR DPC</b>	
Roll length	30 metres
Roll width	various
Thickness	0.6 mm
Weight	0.5 kg/m <sup>2</sup>

### Storage

Store upright in conditions below 30°C.  
Primer B1 5 & 25 ltr units

be cleaned and patched using Bituthene MRX with a minimum 50 mm laps all round.

As soon as practicable after the application, the gas membrane system should be protected from physical damage. Protection is considered to be essential if the membrane is exposed to general site traffic and damage free integrity of the membrane cannot be guaranteed. Protection boards are available from Grace, see separate data sheet for details.

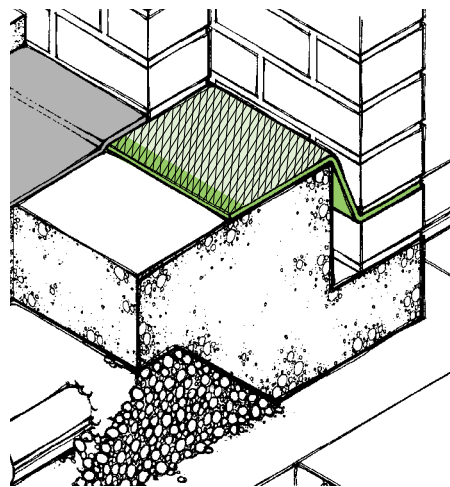
At cavity walls Bituthene MRX should be joined to Bituthene® MR DPC to ensure that any build up of methane gas under the membrane is discharged into the ventilated cavity for safe dispersion into the atmosphere.

### Health And Safety

There is no legal requirement for a Material Safety Data Sheet for Bituthene MRX.  
For Primer B1 read the product label and Material Safety Data Sheet before use. Users must comply with all risk and safety phrases.

### NBS Specification Clause

Refer to Clause J40 180.



**Bituthene MR DPC detail at cavity wall**

### Equipment by Others

Soft brush, stanley knife and airline, or similar, for cleaning surface.

### Physical Properties

Property	Typical Value	ASTM Test Method
Methane Gas (CH <sub>4</sub> ) permeability	0.09 ml/m <sup>2</sup> /24 hr	
Radon Transmission	< 1 x 10 <sup>-9</sup> m.s <sup>-1</sup>	S.P. Institute, Sweden
Tape Strength	Trans 4.2 N/mm Long 3.9 N/mm	EN 12113 B
Elongation	Trans 8% Long 6%	EN 12113 B
Tear Resistance	Trans 102 N Long 104 N	EN 12310
Adhesion to primed concrete	1.8 N/mm	D1000
Adhesion to self	1.7 N/mm	
Puncture Resistance	180 N	E154
Moisture Vapour transmission rate	0.1 g/m <sup>2</sup> /24hr	E 96

### Ancillary Products

Bituthene® MR DPC - a gas resistant damp proof course manufactured from polyethylene and aluminium film. For use in cavity walls to maintain a continuous gas barrier across the wall cavity.

### Application

Recommended priming application temperature +5°C to +35°C. Apply B1 primer to all substrates and allow to dry. Bituthene MRX should be

laid by peeling back the protective silicone release paper and applying the self-adhesive face onto the prepared surface. The material should be brushed on to the surface to ensure good bond with 50 mm at side and ends, and the overlaps well rolled with a firm pressure to ensure complete adhesion and continuity. Following the application and inspection care should be taken to prevent damage by following trades. Any punctures or damaged areas should

 Visit our web site at [www.graceconstruction.com](http://www.graceconstruction.com)

Grace Construction Products Ltd, Ajax Avenue, Slough, Berkshire SL1 4BH United Kingdom Tel +44 (0)1753 692929 Fax +44 (0)1753 691623

Adcor, Aerofil, BETEC, Bituthene, Hydroduct, Insupak, Korkpak, Paraflex, Paraseal, Preprufe, Procor, Servised, Servidek, Servigard, Servijoint, Servimastic, Servipak, Servirufe, Serviseal, Servistrip, Servitite, Vertigard and Vertiseal are registered trademarks of W R Grace & Co.-Conn.  
Adprufe, Armourtape, Bitushield, Bitustik, Bitutape, Hydropaste, Pak Adhesive, PVC Edgetie, Serviband, Serviflex, Servitape, Slipstrip, and Solarshield are trademarks of W R Grace & Co.-Conn.

The information given is based on data and knowledge considered to be true and accurate and is offered for the user's consideration, investigation and verification. Since the conditions of use are beyond our control we do not warrant the results to be obtained. Please read all statements, recommendations or suggestions in conjunction with our conditions of sale including those limiting warranties and remedies which apply to all goods supplied by us. No statement, recommendation or suggestion is intended for any use which would violate or infringe statutory obligations or any rights belonging to a third party.

Copyright 2006. Grace Construction Products Limited.

Printed in England - 05.06- Ref. WM029C

**GRACE**  
Construction Products